

Fort Loudoun Reservoir

Annual Report 2008

Prepared by:

Jim Negus  
and  
Douglas C. Peterson

Tennessee Wildlife Resources Agency  
Region IV  
3030 Wildlife Way  
Morristown, Tennessee 37814

All activities covered in this report were conducted under the following TWRA cost centers: 4311 and 4312. Development of this report was financed in part by funds from Federal Aid in Fish and Wildlife Restoration (Public Law 91-503) as documented in Federal Aid Project FW-6.

This program receives Federal Aid in Fish and Wildlife Restoration. Under Title VI of the Civil Rights Act of 1964 and Section 504 of the Rehabilitation Act of 1973, the U.S. Department of the Interior prohibits discrimination on the basis of race, color, national origin, or disability. If you believe you have been discriminated against in any program, activity, or facility as described above, or if you desire further information, please write to:

Office of Equal Opportunity  
U.S. Department of the Interior  
Washington, D.C. 20240

## Contents

	Page
Species summaries	3-8
<b>Tables:</b>	9
1. Fort Loudoun Reservoir physical and chemical characteristics	10
2. Relative stock density, mean relative weight, and CPUE by RSD category	11
3. Mean relative weight by size class for black crappie by electrofishing	12
4. Mean relative weight by size class for largemouth bass by electrofishing	12
5. Mean relative weight by size class for smallmouth bass by electrofishing	13
6. Mean relative weight by size class for white crappie by electrofishing	13
7. Fish habitat enhancement summary	14
8. Water levels from January to June	15
9. Water levels from June to November	16
10. Water levels from November to December	17
<b>Figures:</b>	18
1. Map of electrofishing sites in lower section	19
2. Map of electrofishing sites in upper section	20
3. April and May water levels	21
4. White crappie length frequency for electrofishing sample	22
5. Largemouth bass length frequency for electrofishing	23
6. Smallmouth bass length frequency for electrofishing	24
7. White crappie length frequency for electrofishing sample	25
8. Black crappie electrofishing catch rates	26
9. Largemouth bass electrofishing catch rates	26
10. Smallmouth bass electrofishing catch rates	27
11. White crappie electrofishing catch rates	27
12. Black crappie relative weight for electrofishing	28
13. Largemouth bass relative weight for electrofishing	29
14. Smallmouth bass relative weight for electrofishing	30
15. White crappie relative weight for electrofishing	31
<b>Appendix - Creel</b>	32

## Fort Loudoun Reservoir - 2008

### Description

**Area:** 14,600 acres

**Shoreline:** 360 miles

**Counties:** Loudon, Knox, and Blount

**Total Fishing Effort in 2008:** 197,702 hours

**Total Value by Anglers in 2008:** \$806,600.00

### Black Bass

Angling Pressure	1999	2000	2001	2002	2003	2004	2005	2006	2007	2008	Mean
All Black Bass (hrs)	-	-	-	-	-	102,531	103,556	-	-	95,230	100,439
All Black Bass (hrs/acre)	-	-	-	-	-	7.02	7.09	-	-	6.52	6.88
Any Black Bass (hrs)	-	-	-	-	-	66,008	18,649	-	-	94,694	59,784
Any Black Bass (hrs/acre)	-	-	-	-	-	4.52	1.28	-	-	6.49	4.09
Largemouth Bass (hrs)	-	-	-	-	-	34,584	79,624	-	-	0	38,069
Largemouth Bass (hrs/acre)	-	-	-	-	-	2.37	5.45	-	-	0.00	2.61
Smallmouth Bass (hrs)	-	-	-	-	-	1,939	5,283	-	-	536	2,586
Smallmouth Bass (hrs/acre)	-	-	-	-	-	0.13	0.36	-	-	0.04	0.18
Spotted Bass (hrs)	-	-	-	-	-	0	0	-	-	0	0
Spotted Bass (hrs/acre)	-	-	-	-	-	0.00	0.00	-	-	0.00	0.00
<b>Tournaments (all black bass)</b>											
Tournament Angler Hrs/Acre (creel)	-	-	-	-	-	-	-	-	-	-	-
Tournament Catch Rate (creel)	-	-	-	-	-	-	-	-	-	-	-
Non-Tournament Catch Rate (creel)	-	-	-	-	-	-	-	-	-	-	-
<b>Value of Fishery (Trip Expenditures)</b>											
All Black Bass	-	-	-	-	-	\$257,260	\$437,060	-	-	\$490,470	\$394,930
Any Black Bass	-	-	-	-	-	\$146,520	\$63,990	-	-	\$487,630	\$232,713
Largemouth Bass	-	-	-	-	-	\$103,840	\$313,540	-	-	\$0	\$139,127
Smallmouth Bass	-	-	-	-	-	\$6,900	\$24,430	-	-	\$2,840	\$11,390
Spotted Bass	-	-	-	-	-	\$0	\$35,100	-	-	\$0	\$11,700

## Largemouth Bass

	1999	2000	2001	2002	2003	2004	2005	2006	2007	2008	Mean
<b>Recruitment</b> (electrofishing)											
Substock CPUE	9.60	8.80	16.80	-	9.80	3.70	25.00	2.00	16.70	22.00	12.71
<b>Density</b> (electrofishing)											
PSD	66	67	60	-	75	65	94	60	71	51	68
RSD (preferred)	-	-	21	-	22	17	23	18	19	16	19
CPUE (total)	42.0	42.3	74.8	-	72.3	56.0	114.3	66.3	97.0	162.0	80.8
CPUE ≥ Stock	32.4	33.5	58.0	-	62.5	52.3	89.3	64.3	80.3	140.0	68.1
CPUE ≥ MLL (14-inches)	-	-	17.5	-	-	17.7	32.3	17.0	23.7	36.0	24.0
<b>Growth</b> (electrofishing)											
Length Age-1	-	-	-	-	-	-	-	-	-	-	-
Length Age-3	-	-	-	-	-	-	-	-	-	-	-
<b>Condition</b> (spring electrofishing)											
Stock	95.9	90.2	84.8	-	86.7	87.2	85.3	85.5	86.3	95.1	88.6
Quality	92.1	94.7	87.4	-	87.2	88.4	87.8	87.3	89.5	94.3	89.9
Preferred	92.1	98.7	97.0	-	96.3	92.3	91.5	89.6	91.7	96.2	93.9
Memorable	97.4	95.1	96.5	-	102.2	101.6	99.0	93.4	103.1	98.4	98.5
<b>Mortality</b> (electrofishing)											
Total Mortality	-	-	-	-	-	-	-	-	-	-	-
<b>Fishing Success</b> (creel)											
Catch Rate (intended)	-	-	-	-	-	0.77	0.64	-	-	-	0.71
Harvest Rate (intended)	-	-	-	-	-	0.34	0.09	-	-	-	0.22
% Released	-	-	-	-	-	91.1%	87.3%	-	-	96.5%	91.6%
Mean Weight	-	-	-	-	-	0.66	2.64	-	-	2.44	1.91

**Fishery Forecast:** The TWRA has documented an increasing trend in largemouth electrofishing catch rates over the past 11-years. The population should remain stable or improve as a result of the excellent 2007 year class.

**Management Recommendations:** The creel limit was changed from a two fish, 14-inch limit to a five fish (in combination with smallmouth), 14-inch minimum length limit in 2001. No changes are planned in the near future.

## Smallmouth Bass

	1999	2000	2001	2002	2003	2004	2005	2006	2007	2008	Mean
<b>Recruitment</b> (electrofishing)											
Substock CPUE	1.40	1.30	1.00	-	0.80	1.00	0.30	3.00	10.00	6.00	2.76
<b>Density</b> (electrofishing)											
PSD	76	57	48	-	81	64	72	30	38	48	57
RSD (preferred)	-	-	40	-	52	5	25	19	13	26	26
CPUE (preferred)	0.6	1.5	1.3	-	1.8	0.3	1.7	1.0	1.0	1.3	1.2
CPUE (memorable)	2.2	0.4	1.0	-	1.0	1.0	0.0	1.3	0.0	0.7	0.8
CPUE (trophy)	1.0	0.0	0.3	-	0.0	0.0	0.0	0.0	0.0	0.3	0.2
CPUE (total)	10.4	5.7	7.3	-	6.0	6.3	7.0	15.3	18.0	15.0	10.1
CPUE ≥ Stock	9.0	4.4	6.3	-	5.2	5.3	6.7	12.3	8.0	9.0	7.4
CPUE ≥ Preferred	3.8	1.9	2.6	-	2.8	1.3	1.7	2.3	1.0	2.3	2.2
CPUE ≥ MLL (18-inches)	-	-	0.3	-	0.3	0.3	0.0	0.0	0.0	0.7	0.2
<b>Growth</b> (electrofishing)											
Length Age-1	-	-	-	-	-	-	-	-	-	-	-
Length Age-3	-	-	-	-	-	-	-	-	-	-	-
<b>Condition</b> (spring electrofishing)											
Stock	88.0	87.1	84.6	-	80.8	77.4	87.4	80.4	85.1	83.6	83.8
Quality	85.0	85.5	77.1	-	80.3	75.3	82.5	90.4	81.5	90.5	83.1
Preferred	91.6	87.5	85.9	-	82.5	62.7	78.3	73.6	79.6	73.4	79.5
Memorable	88.7	92.4	88.7	-	87.2	77.2	-	78.5	-	80.6	84.8
<b>Mortality</b> (electrofishing)											
Total Mortality	-	-	-	-	-	-	-	-	-	-	-
<b>Fishing Success</b> (creel)											
Catch Rate (intended)	-	-	-	-	-	0.40	0.30	-	-	0.25	0.32
Harvest Rate (intended)	-	-	-	-	-	0.00	0.10	-	-	0.00	0.03
% Released	-	-	-	-	-	100.0%	89.5%	-	-	99.4%	96.3%
Mean Weight	-	-	-	-	-	-	3.11	-	-	3.75	3.43

**Fishery Forecast:** Smallmouth electrofishing catch rates have improved during the past three years. The increased number of substock fish collected should help strengthen the population over the next few years.

**Management Recommendations:** We encourage anglers to be patient with the relatively new 18-inch size limit. It may take several years to determine if it is going to help to improve the quality of the fishery.

## Black Crappie

	1999	2000	2001	2002	2003	2004	2005	2006	2007	2008	Mean
<b>Density</b> (electrofishing)											
PSD	-	100	94	-	100	100	94	91	100	99	97
RSD (preferred)	-	-	67	-	41	100	50	45	36	65	58
CPUE (total)	1.0	2.9	4.5	-	4.2	1.7	12.0	3.7	9.3	23.0	6.9
CPUE $\geq$ Stock	-	-	4.5	-	4.3	1.7	12.0	3.7	9.3	23.0	8.4
CPUE $\geq$ MLL (10-inches)	-	-	3.0	-	1.8	1.7	6.0	1.7	3.3	15.0	4.6
<b>Growth</b> (electrofishing)											
Length Age-1	-	-	-	-	-	-	-	-	-	-	-
Length Age-3	-	-	-	-	-	-	-	-	-	-	-
<b>Condition</b> (electrofishing)											
Stock	-	-	86.7	-	-	-	68.9	84.2	-	96.9	84.2
Quality	88.0	95.6	83.1	-	94.9	-	82.4	84.4	92.8	101.1	90.3
Preferred	81.5	88.5	89.3	-	91.4	93.3	83.0	81.8	92.5	95.9	88.6
Memorable	-	90.2	83.7	-	-	92.5	81.2	-	87.7	91.7	87.8
<b>Mortality</b> (electrofishing)											
Total Mortality	-	-	-	-	-	-	-	-	-	-	-
<b>Angling Pressure</b> (creel)											
Angler Hours (all crappie)	-	-	-	-	-	43,116	38,005	-	-	53,849	44,990
Angler Hours/Acre	-	-	-	-	-	3.0	2.6	-	-	3.7	3.1
<b>Fishing Success</b> (creel)											
Catch Rate (any crappie)	-	-	-	-	-	0.77	1.88	-	-	1.42	1.36
Harvest Rate (any crappie)	-	-	-	-	-	0.34	0.48	-	-	0.61	0.48
% Released (black crappie)	-	-	-	-	-	0.0%	59.7%	-	-	40.5%	33.4%
Mean Weight (black crappie)	-	-	-	-	-	1.04	0.69	-	-	1.13	0.95
<b>Value of Fishery</b> (Trip Expenditures - creel)											
All Crappie	-	-	-	-	-	\$49,420	\$79,320	-	-	\$164,360	\$97,700

Fishery Forecast: Black crappie had never been very abundant in our electrofishing samples until 2008. This is encouraging since white crappie catch rates also improved.

Management Recommendations: No changes in creel limits are planned for the future.

## White Crappie

	1999	2000	2001	2002	2003	2004	2005	2006	2007	2008	Mean
<b>Density</b> (electrofishing)											
PSD	100	100	100	-	100	100	98	100	100	100	100
RSD (preferred)	-	-	56	-	56	87	60	77	86	90	73
CPUE (total)	2.2	3.8	4.0	-	16.5	11.3	15.0	13.0	11.7	20.7	10.9
CPUE ≥ Stock	-	-	4.0	-	16.5	11.3	15.0	13.0	11.7	20.7	13.2
CPUE ≥ MLL (10-inches)	-	-	2.3	-	9.3	10.7	9.0	10.0	10.0	18.7	10.0
<b>Growth</b> (electrofishing)											
Length Age-1	-	-	-	-	-	-	-	-	-	-	-
Length Age-3	-	-	-	-	-	-	-	-	-	-	-
<b>Condition</b> (electrofishing)											
Stock	-	-	-	-	-	-	117.0	-	-	-	117.0
Quality	88.1	91.3	84.7	-	95.9	95.7	79.7	88.7	90.3	98.7	90.3
Preferred	89.6	94.5	91.4	-	93.8	99.3	85.3	90.6	90.8	98.0	92.6
Memorable	87.6	92.8	85.0	-	89.7	97.8	84.9	88.5	87.9	97.3	90.2
<b>Mortality</b> (electrofishing)											
Total Mortality	-	-	-	-	-	-	-	-	-	-	-
<b>Angling Pressure</b> (creel)											
Angler Hours (all crappie)	-	-	-	-	-	43,116	38,005	-	-	53,849	44,990
Angler Hours/Acre	-	-	-	-	-	3.0	2.6	-	-	3.7	3.1
<b>Fishing Success</b> (creel)											
Catch Rate (any crappie)	-	-	-	-	-	0.77	1.88	-	-	1.42	1.36
Harvest Rate (any crappie)	-	-	-	-	-	0.34	0.48	-	-	0.61	0.48
% Released (white crappie)	-	-	-	-	-	48.9%	73.6%	-	-	63.4%	62.0%
Mean Weight (white crappie)	-	-	-	-	-	0.70	0.69	-	-	0.90	0.76
<b>Value of Fishery</b> (Trip Expenditures - creel)											
All Crappie	-	-	-	-	-	\$49,420	\$79,320	-	-	\$164,360	\$97,700

**Fishery Forecast:** An increased number of crappie were collected by electrofishing in 2008. Anglers have caught and harvest excellent numbers of crappie during the past several years as determined by our creel survey.

**Management Recommendations:** No changes in creel limits are planned for the future.

## Sunfish

	1999	2000	2001	2002	2003	2004	2005	2006	2007	2008	Mean
<b>Angling Pressure</b> (creel)											
Angler Hours (all sunfish)	-	-	-	-	-	6,387	1,754	-	-	5,052	4,398
Angler Hours/Acre	-	-	-	-	-	0.4	0.1	-	-	0.3	0.3
<b>Fishing Success</b> (creel)											
Catch Rate (any sunfish)	-	-	-	-	-	0.81	4.41	-	-	1.66	2.29
Harvest Rate (any sunfish)	-	-	-	-	-	0.04	1.48	-	-	0.42	0.65
% Released (bluegill)	-	-	-	-	-	100.0%	81.1%	-	-	83.0%	88.0%
Mean Weight (bluegill)	-	-	-	-	-	-	0.39	-	-	0.67	0.53
<b>Value of Fishery</b> (Trip Expenditures - creel)											
All Sunfish	-	-	-	-	-	\$33,630	\$4,610	-	-	\$14,020	\$17,420

## Catfish

	1999	2000	2001	2002	2003	2004	2005	2006	2007	2008	Mean
<b>Angling Pressure</b> (creel)											
Angler Hours (all catfish)	-	-	-	-	-	9,806	5,995	-	-	9,449	8,417
Angler Hours/Acre	-	-	-	-	-	0.7	0.4	-	-	0.6	0.6
<b>Fishing Success</b> (creel)											
Catch Rate (any catfish)	-	-	-	-	-	0.22	0.14	-	-	0.43	0.26
Harvest Rate (any catfish)	-	-	-	-	-	0.00	0.01	-	-	0.09	0.03
% Released (channel)	-	-	-	-	-	-	100.0%	-	-	100.0%	100.0%
Mean Weight (channel)	-	-	-	-	-	-	-	-	-	-	-
<b>Value of Fishery</b> (Trip Expenditures - creel)											
All Catfish	-	-	-	-	-	\$13,600	\$14,740	-	-	\$38,700	\$22,347

## Habitat Enhancement

Type of Work	Details	Quantity	
		New	Renovated
Rebrush	Christmas trees with block	none	1 sites, 68 units, 1.4 acres

## Tables

Table 1. Fort Loudoun Reservoir physical and chemical characteristics.

Surface Area	14,600 acres
Drainage Area	9,550 sq. mi.
Full Pool Elevation	813 feet-msl
Mean Annual Fluctuation	6 feet
Shoreline Distance	378 miles
Total Developed Shoreline	53%
Maximum Depth	78 feet
Outlet Depth	9 feet
Thermocline Depth	23 feet (Aug 2005)
Trophic Status (Forebay)	Eutrophic
Mean Chlorophyll (Forebay)	11.7 mg/L
Trophic Index Value	54.7
Hydraulic Retention Time	10 days
Year Impounded	1943

Table 2. Relative stock density, mean relative weight, and catch per unit effort by RSD category for target species collected in Fort Loudoun Reservoir 1998-2008.

Species	Year	Gear	Samples	Substock			RSD-stock			RSD-quality			RSD-preferred			RSD-memorable			RSD-trophy			Total		PSD					
				No.	CPE	Pct.	No.	CPE	Pct.	Wr	No.	CPE	Pct.	Wr	No.	CPE	Pct.	Wr	No.	CPE	Pct.	Wr	No.	CPE	Pct.				
Largemouth Bass	1998	Electro	20	23	4.6	13.0	45	9.0	25.4	90.0	49	9.8	27.7	93.0	48	9.6	27.1	94.5	12	2.4	6.8	94.8	0	0.0	0.0	0.0	177	35.4	71
	1999	Electro	20	48	9.6	22.9	55	11.0	26.2	95.9	60	12.0	28.6	92.1	32	6.4	15.2	92.1	15	3.0	7.1	97.4	0	0.0	0.0	0.0	210	42.0	66
	2000	Electro	18	42	8.8	20.9	53	11.2	26.4	90.2	63	13.3	31.3	94.7	33	6.9	16.4	98.7	10	2.1	5.0	95.1	0	0.0	0.0	0.0	201	42.3	67
	2001	Electro	16	67	16.8	22.4	92	23.0	30.8	84.8	92	23.0	30.8	87.4	39	9.8	13.0	97.0	9	2.3	3.0	96.5	0	0.0	0.0	0.0	299	74.8	60
	2003	Electro	16	39	9.8	13.5	63	15.8	21.8	86.7	131	32.8	45.3	87.2	49	12.3	17.0	96.3	7	1.8	2.4	102.2	0	0.0	0.0	0.0	289	72.3	75
	2004	Electro	12	11	3.7	6.5	46	15.3	27.4	87.2	75	25.0	44.6	88.4	31	10.3	18.5	92.3	5	1.7	3.0	101.6	0	0.0	0.0	0.0	168	56.0	65
	2005	Electro	12	75	25.0	21.9	74	24.7	21.6	85.3	133	44.3	38.8	87.8	56	18.7	16.3	91.5	5	1.7	1.5	99.0	0	0.0	0.0	0.0	343	114.3	94
	2006	Electro	12	6	2.0	3.0	77	25.7	38.7	85.5	81	27.0	40.7	87.3	32	10.7	16.1	89.6	1	0.3	0.5	93.4	0	0.0	0.0	0.0	199	66.3	60
	2007	Electro	12	50	16.7	17.2	71	23.7	24.4	86.3	125	41.7	43.0	89.5	41	13.7	14.1	91.7	4	1.3	1.4	103.1	0	0.0	0.0	0.0	291	97.0	71
2008	Electro	12	66	22.0	13.6	204	68.0	42.0	95.1	147	49.0	30.2	94.3	58	19.3	11.9	96.2	11	3.7	2.3	98.4	0	0.0	0.0	0.0	486	162.0	51	
Smallmouth Bass	1998	Electro	20	3	0.6	8.1	15	3.0	40.5	77.4	5	1.0	13.5	86.0	4	0.8	10.8	86.7	6	1.2	16.2	100.3	4	0.8	10.8	99.6	37	7.4	56
	1999	Electro	20	7	1.4	13.5	11	2.2	21.2	88.0	15	3.0	28.9	85.0	3	0.6	5.8	91.6	11	2.2	21.2	88.7	5	1.0	9.6	0.0	52	10.4	76
	2000	Electro	18	6	1.3	22.2	9	1.9	33.3	87.1	2	0.4	7.4	85.5	7	1.5	25.9	87.5	2	0.4	7.4	92.4	0	0.0	0.0	0.0	27	5.7	57
	2001	Electro	16	4	1.0	13.8	13	3.3	44.8	84.6	2	0.5	6.9	77.1	5	1.3	17.2	85.9	4	1.0	13.8	88.7	1	0.3	3.4	na	29	7.3	48
	2003	Electro	16	3	0.8	12.5	4	1.0	16.7	80.8	6	1.5	25.0	80.3	7	1.8	29.2	82.5	4	1.0	16.7	87.2	0	0.0	0.0	0.0	24	6.0	81
	2004	Electro	12	3	1.0	15.8	3	1.0	15.8	77.4	9	3.0	47.4	75.3	1	0.3	5.3	62.7	3	1.0	15.8	77.2	0	0.0	0.0	0.0	19	6.3	64
	2005	Electro	12	1	0.3	4.8	5	1.7	23.8	87.4	10	3.3	47.6	82.5	5	1.7	23.8	78.3	0	0.0	0.0	0.0	0	0.0	0.0	0.0	21	7.0	72
	2006	Electro	12	9	3.0	19.6	26	8.7	56.5	80.4	4	1.3	8.7	90.4	3	1.0	6.5	73.6	4	1.3	8.7	78.5	0	0.0	0.0	0.0	46	15.3	30
	2007	Electro	12	30	10.0	55.6	15	5.0	27.8	85.1	6	2.0	11.1	81.5	3	1.0	5.6	79.6	0	0.0	0.0	0.0	0	0.0	0.0	0.0	54	18.0	38
2008	Electro	12	18	6.0	40.0	14	4.7	31.1	83.6	6	2.0	13.3	90.5	4	1.3	8.9	73.4	2	0.7	4.4	80.6	1	0.3	2.2	na	45	15.0	48	
White Crappie	1998	Electro	20	0	0.0	0.0	2	0.4	4.8	81.5	9	1.8	21.4	88.8	24	4.8	57.1	89.5	6	1.2	14.3	91.4	1	0.2	2.4	na	42	8.4	95
	1999	Electro	20	0	0.0	0.0	0	0.0	0.0	0.0	1	0.2	9.0	88.1	5	1.0	45.5	89.6	5	1.0	45.5	87.6	0	0.0	0.0	0.0	11	2.2	100
	2000	Electro	18	0	0.0	0.0	0	0.0	0.0	0.0	2	0.4	11.1	91.3	12	2.5	66.6	94.5	4	0.8	22.2	92.8	0	0.0	0.0	0.0	18	3.8	100
	2001	Electro	16	0	0.0	0.0	0	0.0	0.0	0.0	7	1.8	43.8	84.7	5	1.3	31.3	91.4	4	1.0	25.0	85.0	0	0.0	0.0	0.0	16	4.0	100
	2003	Electro	16	0	0.0	0.0	0	0.0	0.0	0.0	29	7.3	43.9	95.9	21	5.3	31.9	93.8	16	4.0	24.2	89.7	0	0.0	0.0	0.0	66	16.5	100
	2004	Electro	12	0	0.0	0.0	0	0.0	0.0	0.0	2	0.7	5.9	95.7	25	8.3	73.5	99.3	7	2.3	20.6	97.8	0	0.0	0.0	0.0	34	11.3	100
	2005	Electro	12	0	0.0	0.0	1	0.3	2.2	117.6	17	5.7	37.8	79.7	23	7.7	51.1	85.3	4	1.3	8.9	84.9	0	0.0	0.0	0.0	45	15.0	98
	2006	Electro	12	0	0.0	0.0	0	0.0	0.0	0.0	9	3.0	23.1	88.7	23	7.7	59.0	90.6	7	2.3	17.9	88.5	0	0.0	0.0	0.0	39	13.0	100
	2007	Electro	12	0	0.0	0.0	0	0.0	0.0	0.0	5	1.7	14.3	90.3	20	6.7	57.1	90.8	10	3.3	28.6	87.9	0	0.0	0.0	0.0	35	11.7	100
2008	Electro	12	0	0.0	0.0	0	0.0	0.0	0.0	6	2.0	9.7	98.7	36	12.0	58.1	98.0	20	6.7	32.3	97.3	0	0.0	0.0	0.0	62	20.7	100	
Black Crappie	1998	Electro	20	0	0.0	0.0	0	0.0	0.0	0.0	0	0.0	0.0	0.0	4	0.8	100.0	82.3	0	0.0	0.0	0.0	0	0.0	0.0	0.0	4	0.8	
	1999	Electro	20	0	0.0	0.0	0	0.0	0.0	0.0	2	0.4	40.0	88.0	3	0.6	60.0	81.5	0	0.0	0.0	0.0	0	0.0	0.0	0.0	5	1.0	
	2000	Electro	18	0	0.0	0.0	0	0.0	0.0	0.0	3	0.6	21.4	95.6	8	1.7	57.1	88.5	3	0.6	21.4	90.2	0	0.0	0.0	0.0	14	2.9	100
	2001	Electro	16	0	0.0	0.0	1	0.3	5.6	86.7	5	1.3	27.8	83.1	4	1.0	22.2	89.3	8	2.0	44.4	83.7	0	0.0	0.0	0.0	18	4.5	94
	2003	Electro	16	0	0.0	0.0	0	0.0	0.0	0.0	10	2.5	58.8	94.9	7	1.8	41.2	91.4	0	0.0	0.0	0.0	0	0.0	0.0	0.0	17	4.2	100
	2004	Electro	12	0	0.0	0.0	0	0.0	0.0	0.0	0	0.0	0.0	0.0	2	0.7	40.0	93.3	3	1.0	60.0	92.5	0	0.0	0.0	0.0	5	1.7	100
	2005	Electro	12	0	0.0	0.0	2	0.7	5.6	68.9	16	5.3	44.4	82.4	15	5.0	41.7	83.0	3	1.0	8.3	81.2	0	0.0	0.0	0.0	36	12.0	94
	2006	Electro	12	0	0.0	0.0	1	0.3	9.0	84.2	5	1.7	45.5	84.4	5	1.7	45.5	81.8	0	0.0	0.0	0.0	0	0.0	0.0	0.0	11	3.7	91
	2007	Electro	12	0	0.0	0.0	0	0.0	0.0	0.0	18	6.0	64.3	92.8	4	1.3	14.3	92.5	6	2.0	21.4	87.7	0	0.0	0.0	0.0	28	9.3	100
2008	Electro	12	0	0.0	0.0	1	0.3	1.5	96.9	23	7.7	33.3	101.1	35	11.7	50.7	95.9	10	3.3	14.5	91.7	0	0.0	0.0	0.0	69	23.0	99	

Table 3. Mean relative weight and standard error values by size class for Fort Loudoun Reservoir black crappie collected during the 2008 electrofishing sample.

<b>Size Class</b>	<b>Mean Wr</b>	<b>Std. Error</b>	<b>N</b>
7	96.9		1
8	99.5	2.7	8
9	101.3	1.3	18
10	97.8	2.3	11
11	94.1	1.1	26
12	91.4	4.0	5

**Total Catch** 69

Table 4. Mean relative weight and standard error values by size class for Fort Loudoun Reservoir largemouth bass collected during the 2008 electrofishing sample.

<b>Size Class</b>	<b>Mean Wr</b>	<b>Std. Error</b>	<b>N</b>
6	90.1	5.2	2
7	90.9	2.2	9
8	92.9	1.0	68
9	101.6	4.4	57
10	93.7	1.6	25
11	92.5	1.1	57
12	94.7	1.2	59
13	93.5	1.3	36
14	93.9	1.3	44
15	90.9	4.0	23
16	99.8	3.7	9
17	103.7	3.2	9
18	98.5	3.0	4
19	102.7	1.9	8
20	93.9	4.4	6
21	102.8	5.9	4
22	108.1		1

**Total Catch** 421

Table 5. Mean relative weight and standard error values by size class for Fort Loudoun Reservoir smallmouth bass collected during the 2008 electrofishing sample.

<b>Size Class</b>	<b>Mean Wr</b>	<b>Std. Error</b>	<b>N</b>
7	83.2		1
8	83.1	3.7	2
9	83.9	1.9	3
10	83.7	2.9	4
11	90.1	3.4	5
12			
13	92.8		1
14	71.0		1
15	77.2	10.2	2
16	68.2		1
17	76.9		1
18	84.4		1
19			
20	79.5		1
<b>Total Catch</b>			<b>23</b>

Table 6. Mean relative weight and standard error values by size class for Fort Loudoun Reservoir white crappie collected during the 2008 electrofishing sample.

<b>Size Class</b>	<b>Mean Wr</b>	<b>Std. Error</b>	<b>N</b>
8	100.6	1.1	2
9	97.8	4.0	4
10	98.5	1.8	15
11	97.5	0.8	28
12	96.9	2.7	11
13	98.6	1.7	2
<b>Total Catch</b>			<b>62</b>

Table 7. Fort Loudoun Reservoir fish habitat enhancement summary for 2008.

LOCATION	NEW SITES			RENOVATED SITES			EXPANDED SITES		
	NUMBER	UNITS	ACRES	NUMBER	UNITS	ACRES	NUMBER	UNITS	ACRES
TRM 606.75 R*				1	68	1.36			
TOTAL				1	68	1.36			

\*Christmas trees with block

Table 8. Fort Loudoun Reservoir water levels for 2008. (TVA)

ELEVATION	MONTH	DAY	ELEVATION	MONTH	DAY	ELEVATION	MONTH	DAY
809.77	JANUARY	1	809.11	FEBRUARY	24	811.27	APRIL	19
809.77	JANUARY	2	809.24	FEBRUARY	25	811.56	APRIL	20
809.78	JANUARY	3	809.03	FEBRUARY	26	811.54	APRIL	21
809.58	JANUARY	4	809.48	FEBRUARY	27	811.65	APRIL	22
809.48	JANUARY	5	809.62	FEBRUARY	28	811.82	APRIL	23
809.29	JANUARY	6	809.46	MARCH	1	811.87	APRIL	24
809.10	JANUARY	7	809.44	MARCH	2	811.46	APRIL	25
809.02	JANUARY	8	809.51	MARCH	3	811.50	APRIL	26
808.71	JANUARY	9	810.00	MARCH	4	811.65	APRIL	27
809.19	JANUARY	10	810.85	MARCH	5	811.85	APRIL	28
809.85	JANUARY	11	810.47	MARCH	6	812.19	APRIL	29
809.93	JANUARY	12	810.28	MARCH	7	812.40	APRIL	30
809.96	JANUARY	13	809.74	MARCH	8	812.40	MAY	1
809.86	JANUARY	14	809.99	MARCH	9	812.35	MAY	2
809.68	JANUARY	15	810.12	MARCH	10	812.48	MAY	3
809.32	JANUARY	16	810.27	MARCH	11	812.50	MAY	4
809.22	JANUARY	17	810.41	MARCH	12	812.40	MAY	5
809.02	JANUARY	18	810.58	MARCH	13	812.40	MAY	6
808.74	JANUARY	19	810.66	MARCH	14	812.36	MAY	7
808.78	JANUARY	20	810.53	MARCH	15	812.41	MAY	8
808.53	JANUARY	21	810.69	MARCH	16	812.48	MAY	9
808.63	JANUARY	22	810.44	MARCH	17	812.63	MAY	10
808.99	JANUARY	23	810.09	MARCH	18	812.75	MAY	11
809.12	JANUARY	24	810.08	MARCH	19	812.74	MAY	12
809.33	JANUARY	25	810.45	MARCH	20	812.74	MAY	13
809.08	JANUARY	26	810.40	MARCH	21	812.76	MAY	14
808.93	JANUARY	27	810.17	MARCH	22	812.81	MAY	15
808.85	JANUARY	28	809.94	MARCH	23	812.74	MAY	16
808.80	JANUARY	29	810.03	MARCH	24	812.83	MAY	17
808.54	JANUARY	30	809.87	MARCH	25	812.91	MAY	18
808.74	JANUARY	31	809.63	MARCH	26	812.88	MAY	19
809.08	FEBRUARY	1	809.78	MARCH	27	812.96	MAY	20
809.24	FEBRUARY	2	809.87	MARCH	28	813.02	MAY	21
809.48	FEBRUARY	3	810.10	MARCH	29	813.00	MAY	22
809.77	FEBRUARY	4	810.39	MARCH	30	813.01	MAY	23
809.79	FEBRUARY	5	810.40	MARCH	31	812.99	MAY	24
810.11	FEBRUARY	6	810.58	APRIL	1	813.00	MAY	25
810.48	FEBRUARY	7	810.70	APRIL	2	813.03	MAY	26
810.58	FEBRUARY	8	810.75	APRIL	3	813.03	MAY	27
810.32	FEBRUARY	9	811.06	APRIL	4	813.22	MAY	28
809.65	FEBRUARY	10	811.37	APRIL	5	813.20	MAY	29
809.25	FEBRUARY	11	811.71	APRIL	6	812.85	MAY	30
809.19	FEBRUARY	12	811.85	APRIL	7	812.90	MAY	31
809.39	FEBRUARY	13	811.73	APRIL	8	812.97	JUNE	1
809.35	FEBRUARY	14	811.50	APRIL	9	812.95	JUNE	2
809.33	FEBRUARY	15	811.26	APRIL	10	812.85	JUNE	3
809.56	FEBRUARY	16	810.98	APRIL	11	812.80	JUNE	4
809.69	FEBRUARY	17	810.93	APRIL	12	812.74	JUNE	5
809.36	FEBRUARY	18	810.91	APRIL	13	812.62	JUNE	6
809.31	FEBRUARY	19	810.93	APRIL	14	812.63	JUNE	7
809.06	FEBRUARY	20	810.98	APRIL	15	812.53	JUNE	8
808.93	FEBRUARY	21	811.03	APRIL	16	812.56	JUNE	9
808.92	FEBRUARY	22	811.29	APRIL	17	812.57	JUNE	10
809.00	FEBRUARY	23	811.16	APRIL	18	812.64	JUNE	11

Table 9. Fort Loudoun Reservoir water levels for 2008. (TVA)

ELEVATION	MONTH	DAY	ELEVATION	MONTH	DAY	ELEVATION	MONTH	DAY
812.80	JUNE	12	812.41	AUGUST	5	812.15	SEPTEMBER	28
812.84	JUNE	13	812.11	AUGUST	6	811.89	SEPTEMBER	29
812.90	JUNE	14	812.03	AUGUST	7	811.97	SEPTEMBER	30
812.94	JUNE	15	811.58	AUGUST	8	812.06	OCTOBER	1
812.82	JUNE	16	811.72	AUGUST	9	812.06	OCTOBER	2
812.78	JUNE	17	811.79	AUGUST	10	812.10	OCTOBER	3
812.77	JUNE	18	811.67	AUGUST	11	812.19	OCTOBER	4
812.65	JUNE	19	811.73	AUGUST	12	812.00	OCTOBER	5
812.53	JUNE	20	811.93	AUGUST	13	811.75	OCTOBER	6
812.31	JUNE	21	812.05	AUGUST	14	811.71	OCTOBER	7
812.25	JUNE	22	812.27	AUGUST	15	811.99	OCTOBER	8
812.03	JUNE	23	812.35	AUGUST	16	812.28	OCTOBER	9
812.10	JUNE	24	812.27	AUGUST	17	812.43	OCTOBER	10
812.10	JUNE	25	812.17	AUGUST	18	812.45	OCTOBER	11
812.27	JUNE	26	812.31	AUGUST	19	812.24	OCTOBER	12
812.24	JUNE	27	812.37	AUGUST	20	812.18	OCTOBER	13
812.24	JUNE	28	812.38	AUGUST	21	812.10	OCTOBER	14
812.34	JUNE	29	812.51	AUGUST	22	812.13	OCTOBER	15
812.35	JUNE	30	812.36	AUGUST	23	812.09	OCTOBER	16
812.33	JULY	1	812.10	AUGUST	24	812.16	OCTOBER	17
812.22	JULY	2	812.13	AUGUST	25	812.06	OCTOBER	18
812.16	JULY	3	812.46	AUGUST	26	811.86	OCTOBER	19
811.98	JULY	4	812.76	AUGUST	27	811.84	OCTOBER	20
812.10	JULY	5	812.82	AUGUST	28	811.78	OCTOBER	21
812.18	JULY	6	812.82	AUGUST	29	811.78	OCTOBER	22
812.27	JULY	7	812.36	AUGUST	30	811.98	OCTOBER	23
812.46	JULY	8	812.27	AUGUST	31	812.11	OCTOBER	24
812.53	JULY	9	812.30	SEPTEMBER	1	812.14	OCTOBER	25
812.66	JULY	10	812.28	SEPTEMBER	2	812.00	OCTOBER	26
812.61	JULY	11	812.39	SEPTEMBER	3	811.91	OCTOBER	27
812.69	JULY	12	812.48	SEPTEMBER	4	811.87	OCTOBER	28
812.92	JULY	13	812.80	SEPTEMBER	5	811.92	OCTOBER	29
812.82	JULY	14	812.81	SEPTEMBER	6	811.90	OCTOBER	30
812.94	JULY	15	812.80	SEPTEMBER	7	811.83	OCTOBER	31
812.94	JULY	16	812.72	SEPTEMBER	8	811.84	NOVEMBER	1
812.81	JULY	17	812.83	SEPTEMBER	9	811.76	NOVEMBER	2
812.68	JULY	18	812.79	SEPTEMBER	10	811.59	NOVEMBER	3
812.63	JULY	19	812.67	SEPTEMBER	11	811.55	NOVEMBER	4
812.43	JULY	20	812.52	SEPTEMBER	12	811.43	NOVEMBER	5
812.34	JULY	21	812.72	SEPTEMBER	13	811.30	NOVEMBER	6
812.31	JULY	22	812.80	SEPTEMBER	14	811.13	NOVEMBER	7
812.34	JULY	23	812.96	SEPTEMBER	15	811.08	NOVEMBER	8
812.27	JULY	24	812.86	SEPTEMBER	16	811.02	NOVEMBER	9
812.31	JULY	25	812.73	SEPTEMBER	17	810.96	NOVEMBER	10
812.52	JULY	26	812.55	SEPTEMBER	18	810.67	NOVEMBER	11
812.52	JULY	27	812.39	SEPTEMBER	19	810.52	NOVEMBER	12
812.83	JULY	28	812.37	SEPTEMBER	20	810.47	NOVEMBER	13
813.15	JULY	29	812.34	SEPTEMBER	21	810.42	NOVEMBER	14
813.01	JULY	30	812.22	SEPTEMBER	22	810.48	NOVEMBER	15
813.01	JULY	31	812.25	SEPTEMBER	23	810.45	NOVEMBER	16
812.84	AUGUST	1	812.35	SEPTEMBER	24	810.33	NOVEMBER	17
812.78	AUGUST	2	812.44	SEPTEMBER	25	810.23	NOVEMBER	18
812.48	AUGUST	3	812.25	SEPTEMBER	26	810.13	NOVEMBER	19
812.33	AUGUST	4	812.17	SEPTEMBER	27	810.01	NOVEMBER	20

Table 10. Fort Loudoun Reservoir water levels for 2008. (TVA

ELEVATION	MONTH	DAY
809.91	NOVEMBER	21
809.86	NOVEMBER	22
809.78	NOVEMBER	23
809.66	NOVEMBER	24
809.47	NOVEMBER	25
809.82	NOVEMBER	26
809.79	NOVEMBER	27
809.61	NOVEMBER	28
809.46	NOVEMBER	29
809.41	NOVEMBER	30
809.40	DECEMBER	1
809.31	DECEMBER	2
809.20	DECEMBER	3
809.08	DECEMBER	4
808.77	DECEMBER	5
808.96	DECEMBER	6
808.86	DECEMBER	7
808.64	DECEMBER	8
808.85	DECEMBER	9
809.57	DECEMBER	10
810.66	DECEMBER	11
810.99	DECEMBER	12
810.58	DECEMBER	13
809.73	DECEMBER	14
808.51	DECEMBER	15
808.28	DECEMBER	16
808.62	DECEMBER	17
808.78	DECEMBER	18
808.44	DECEMBER	19
809.21	DECEMBER	20
809.26	DECEMBER	21
809.35	DECEMBER	22
808.68	DECEMBER	23
808.25	DECEMBER	24
808.29	DECEMBER	25
808.48	DECEMBER	26
808.53	DECEMBER	27
808.43	DECEMBER	28
808.64	DECEMBER	29
808.72	DECEMBER	30
808.63	DECEMBER	31

## Figures

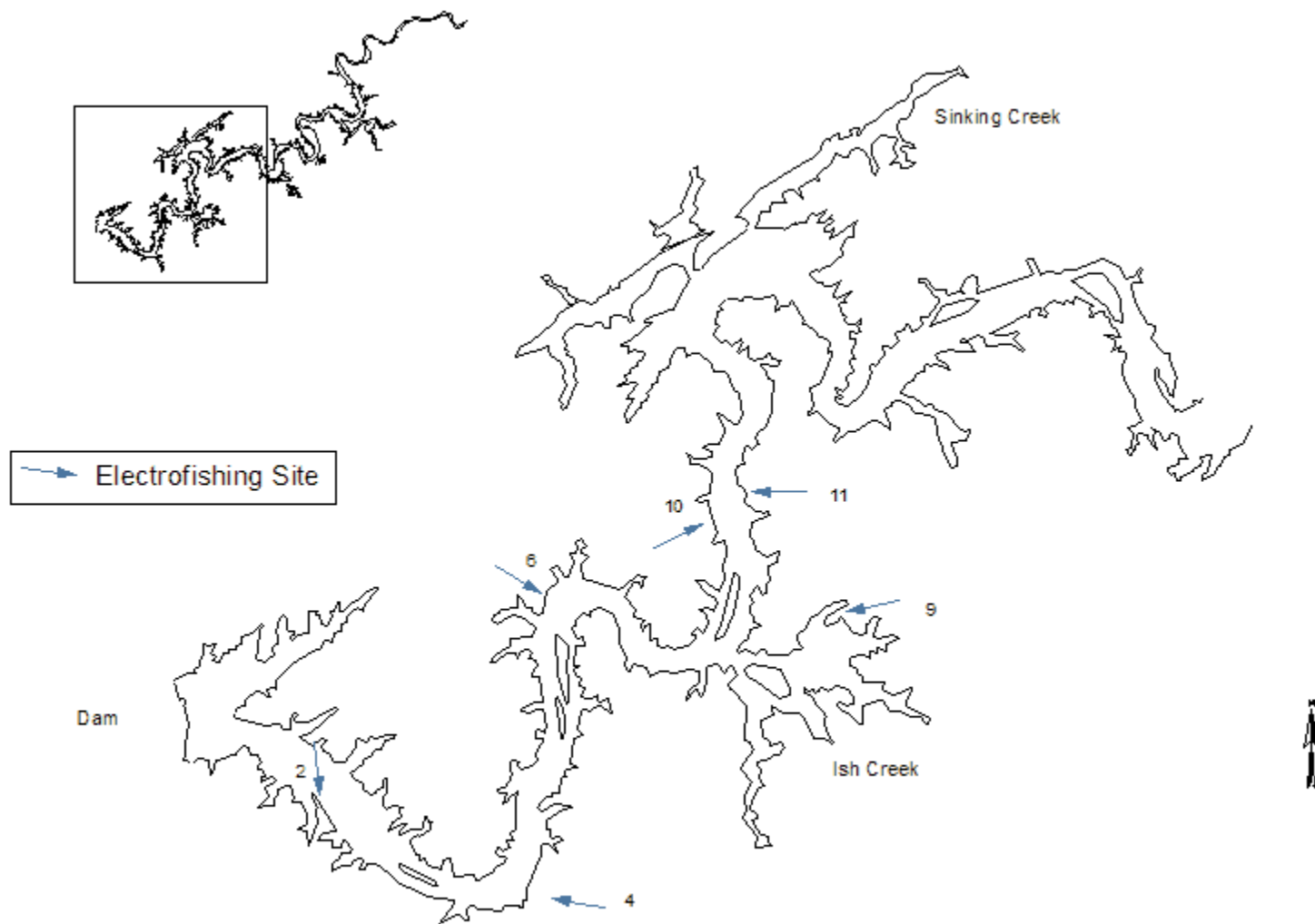


Figure 1. Electrofishing sites in the lower section of Fort Loudoun Reservoir in 2008.

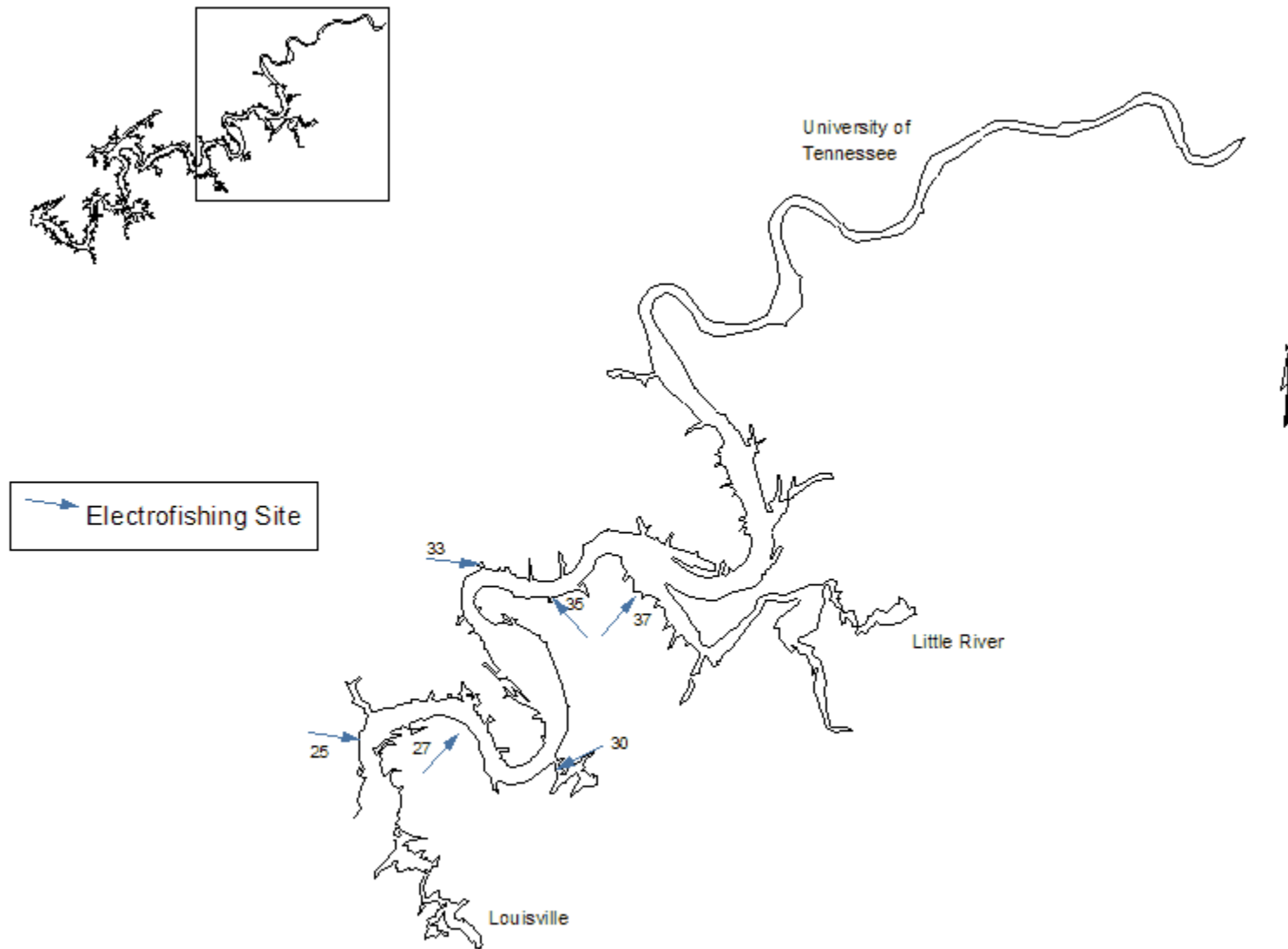


Figure 2. Electrofishing sites in the upper section of Fort Loudoun Reservoir in 2008.

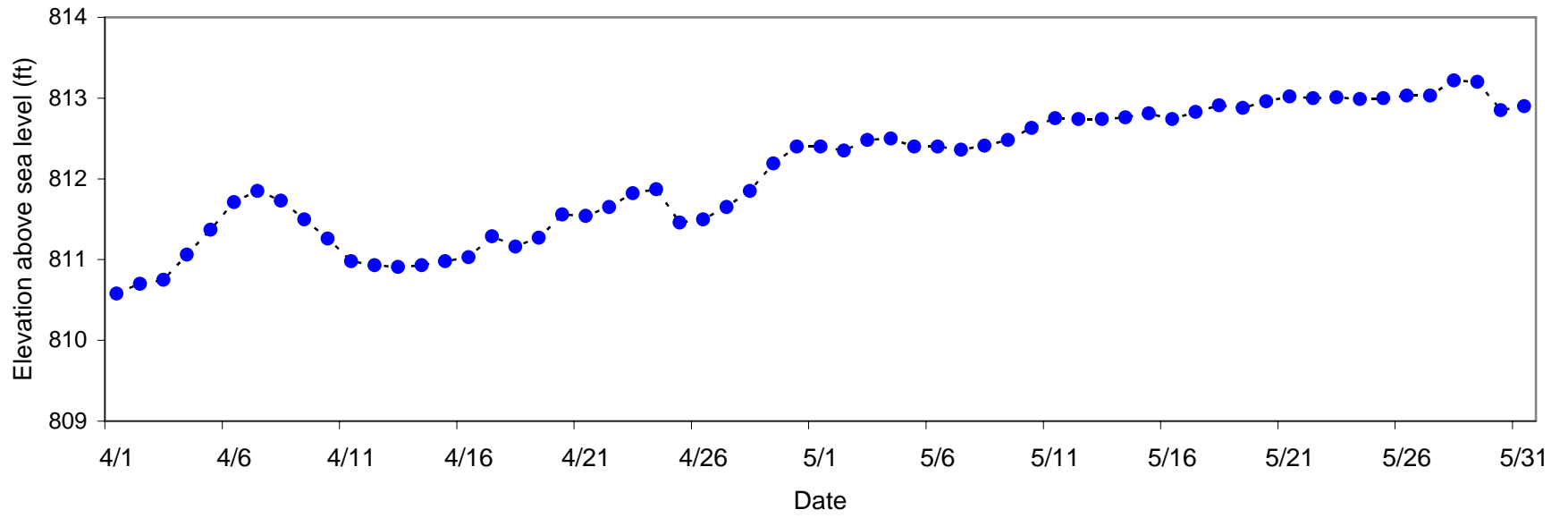


Figure 3. Fort Loudoun's 2008 April and May water levels (TVA data).

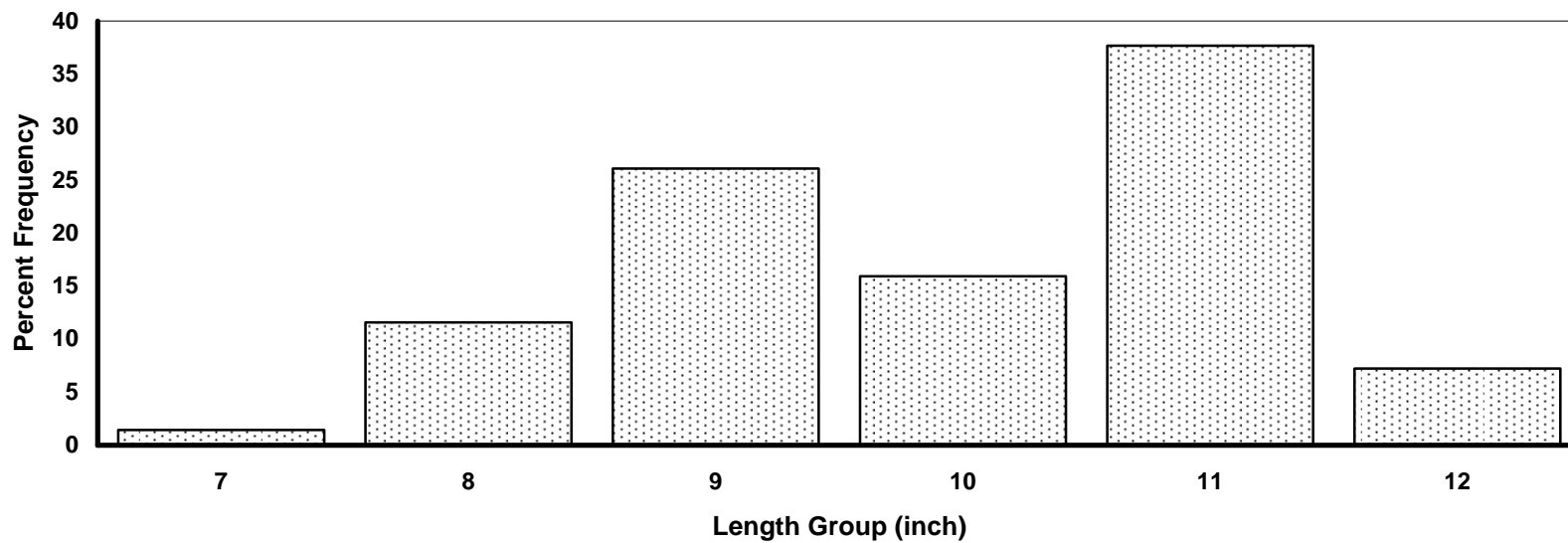


Figure 4. Fort Loudoun Reservoir black crappie length frequency by percent for the 2008 electrofishing sample (n=69).

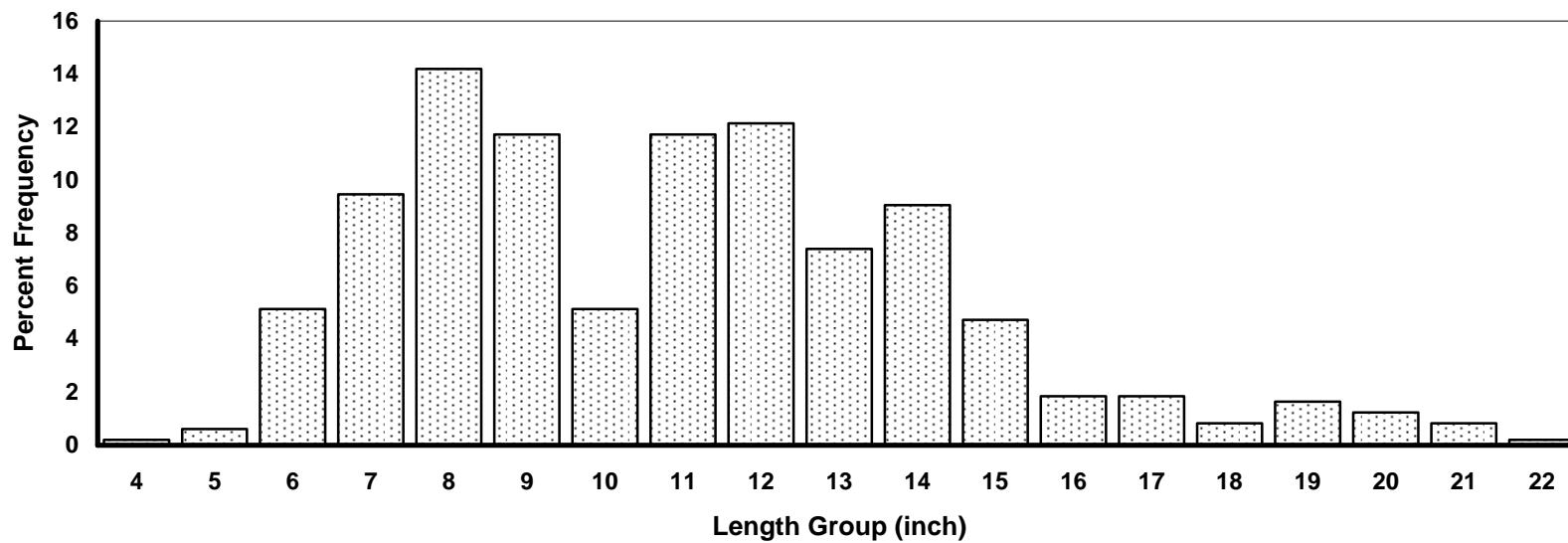


Figure 5. Fort Loudoun Reservoir largemouth bass length frequency by percent for the 2008 electrofishing sample (n=486).

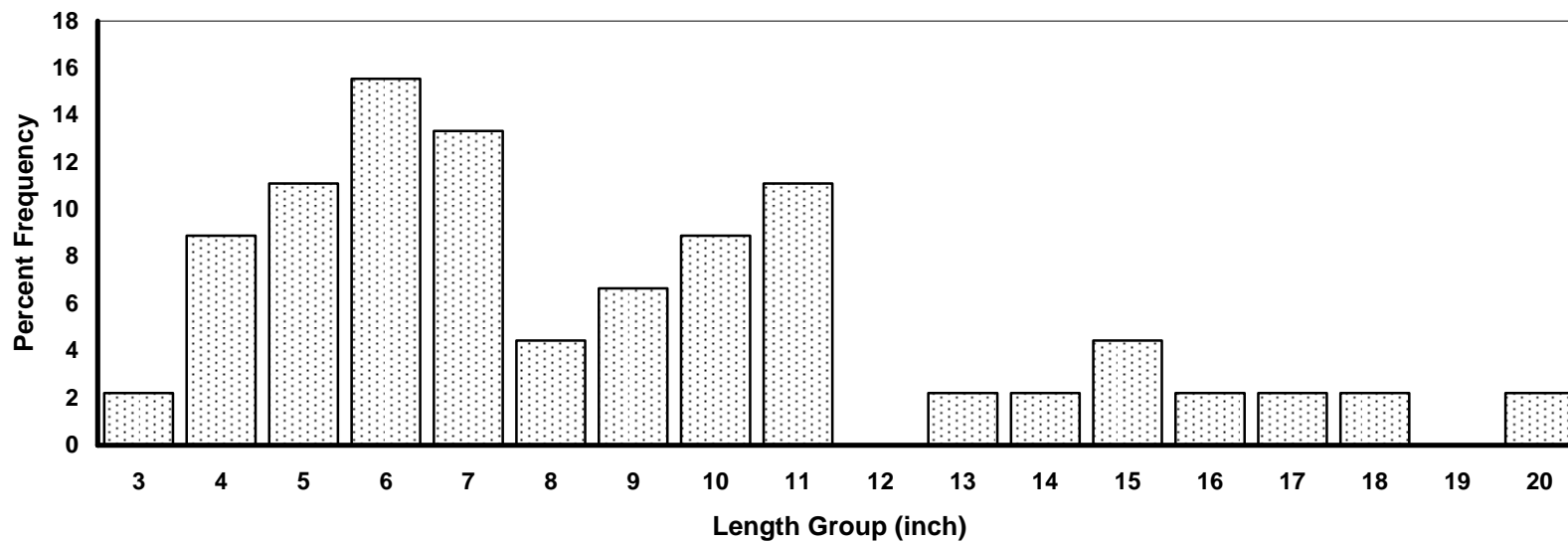


Figure 6. Fort Loudoun Reservoir smallmouth bass length frequency by percent for the 2008 electrofishing sample (n=45).

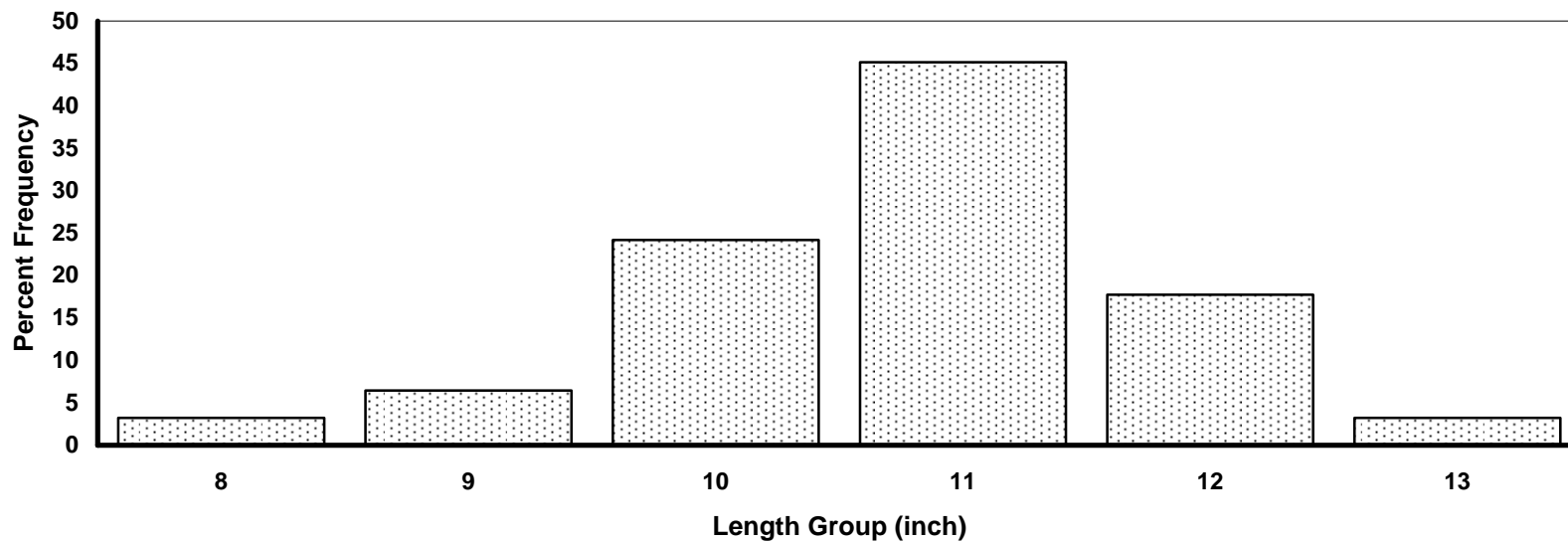


Figure 7. Fort Loudoun Reservoir white crappie length frequency by percent for the 2008 electrofishing sample (n=62).

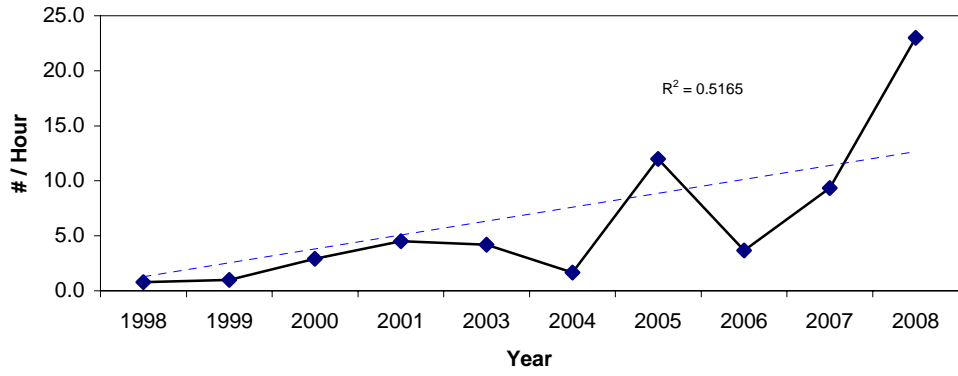


Figure 8. Fort Loudoun Reservoir black crappie electrofishing catch rates from 1998 to 2008.

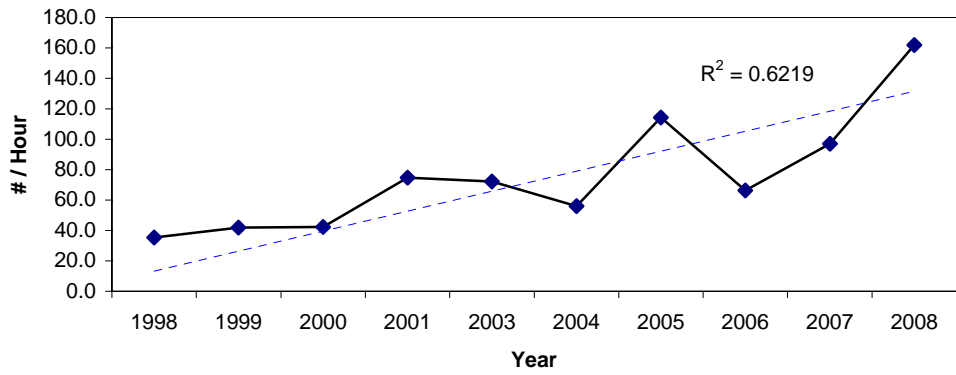


Figure 9. Fort Loudoun Reservoir largemouth bass electrofishing catch rates from 1998 to 2008.

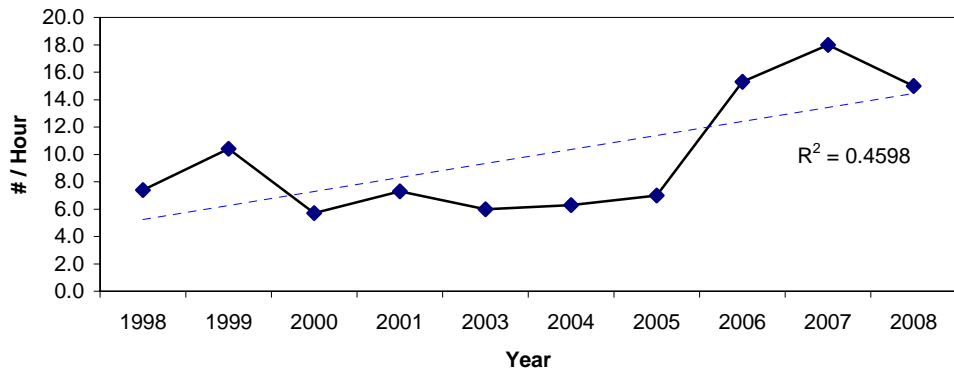


Figure 10. Fort Loudoun Reservoir smallmouth bass electrofishing catch rates from 1998 to 2008.

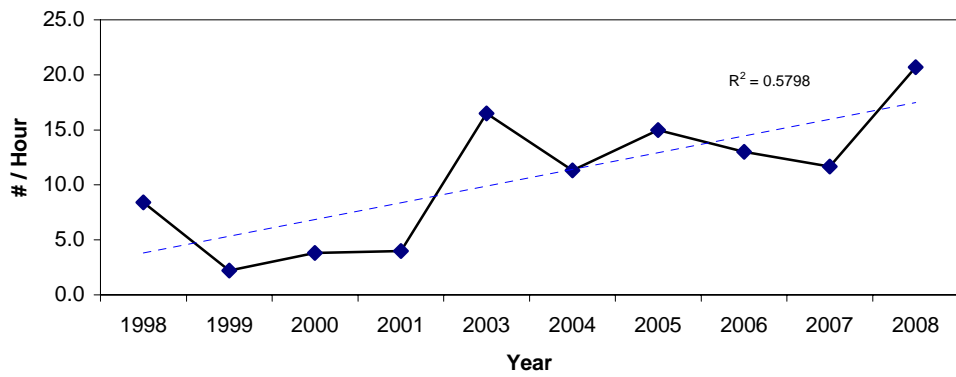


Figure 11. Fort Loudoun Reservoir white crappie electrofishing catch rates from 1998 to 2008.

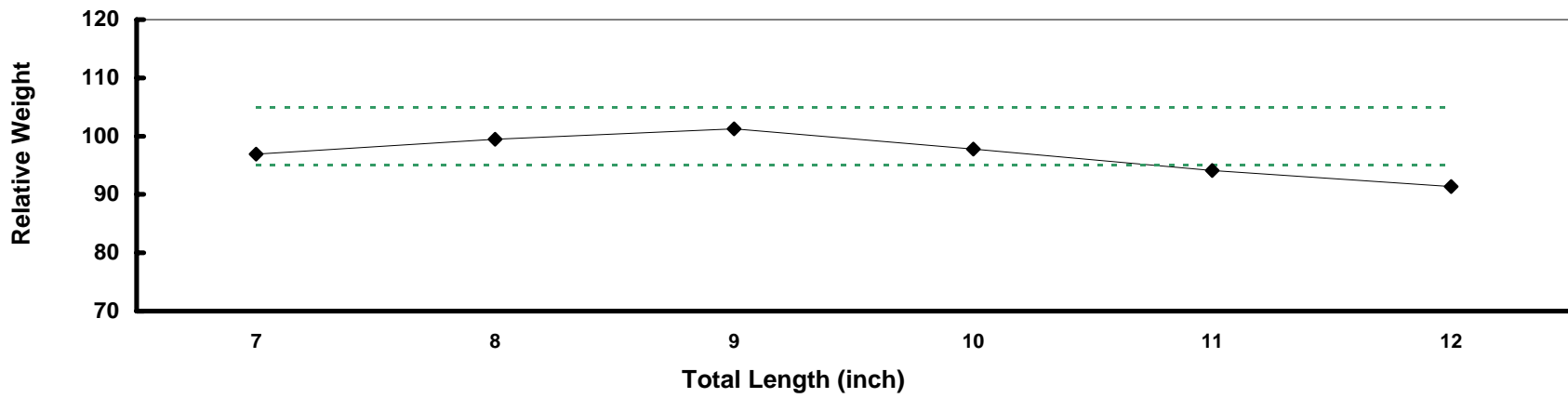


Figure 12. Fort Loudoun Reservoir black crappie mean relative weight values from the 2008 electrofishing sample (n=69).

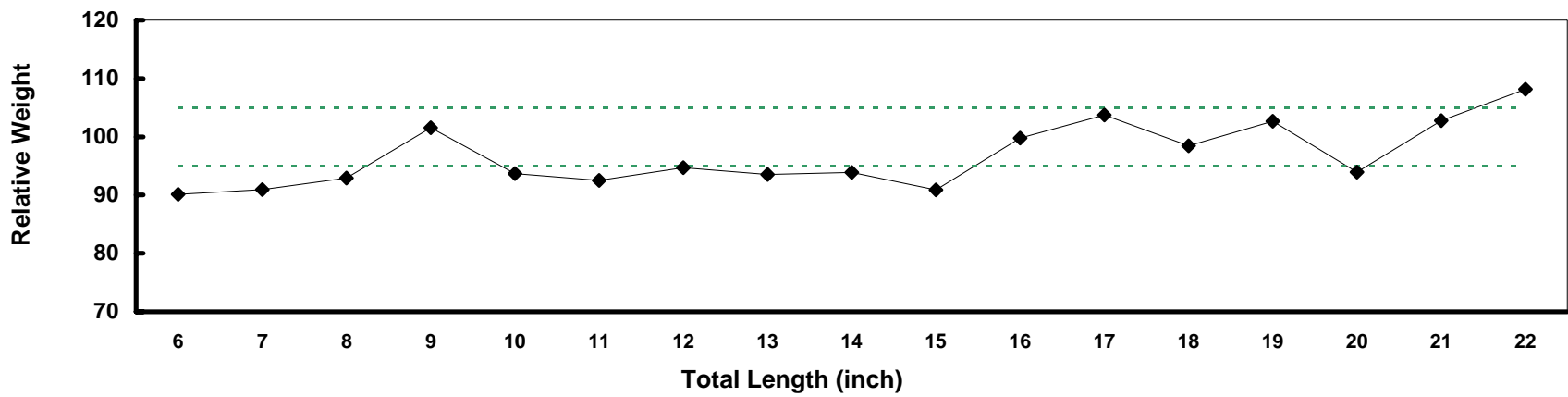


Figure 13. Fort Loudoun Reservoir largemouth bass mean relative weight values from the 2008 electrofishing sample (n=421).

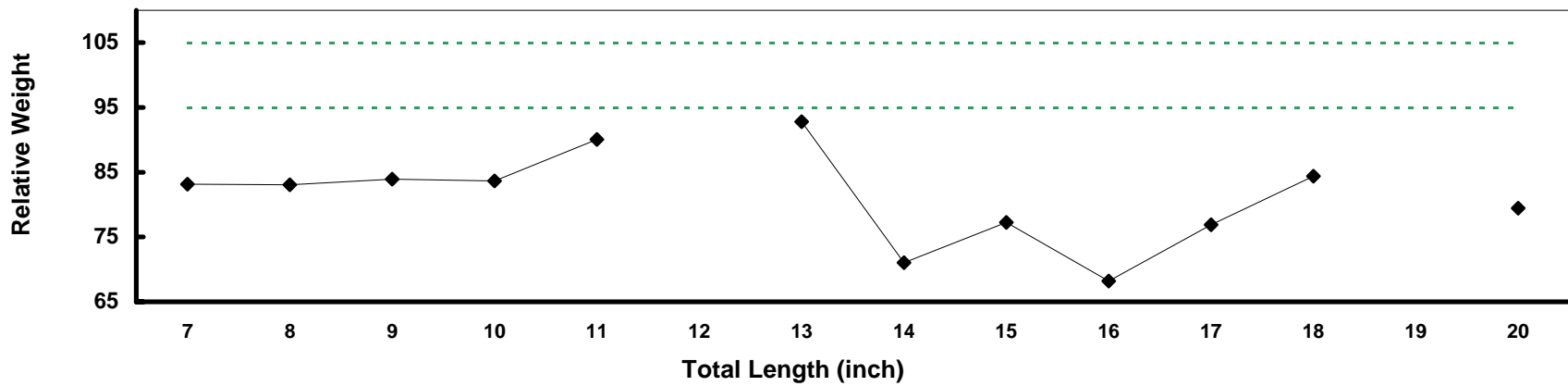


Figure 14. Fort Loudoun Reservoir smallmouth bass mean relative weight values from the 2008 electrofishing sample (n=23).

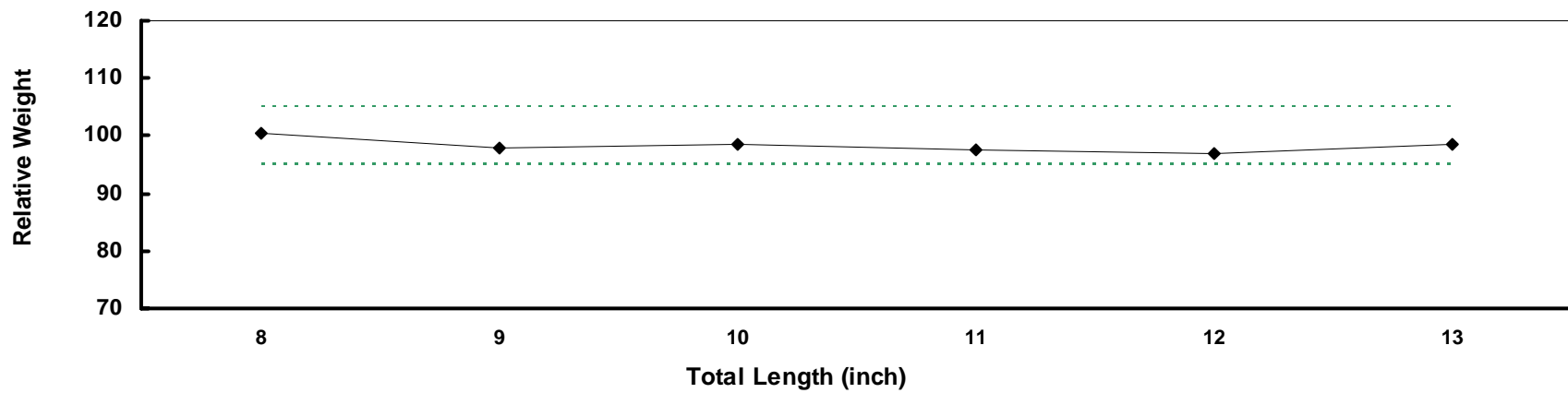


Figure 15. Fort Loudoun Reservoir white crappie mean relative weight values from the 2008 electrofishing sample (n=62).

Appendix – Creel

MONTHLY ANGLING EFFORT FOR ALL ANGLERS - 2008

LAKE=FT. LOUDOUN

MONTH	ANGLER HOURS	RELATIVE STANDARD ERROR	HOURS PER ACRE	ANGLER TRIPS	TRIPS PER ACRE	PERCENT EFFORT
01 JANUARY	6278	36.3	0.4	1683	0.1	3.2
02 FEBRUARY	5701	16.4	0.4	935	0.1	2.9
03 MARCH	17609	15.1	1.2	3533	0.2	8.9
04 APRIL	27571	15.5	1.9	5280	0.4	13.9
05 MAY	24033	17.6	1.6	4921	0.3	12.2
06 JUNE	28825	5.7	2.0	6067	0.4	14.6
07 JULY	21771	34.6	1.5	4910	0.3	11.0
08 AUGUST	23151	24.0	1.6	5646	0.4	11.7
09 SEPTEMBER	14072	12.8	1.0	3244	0.2	7.1
10 OCTOBER	14151	20.1	1.0	3216	0.2	7.2
11 NOVEMBER	4988	22.6	0.3	1692	0.1	2.5
12 DECEMBER	9552	31.9	0.7	2279	0.2	4.8
-----	-----			-----		
<b>TOTAL</b>	<b>197702</b>			<b>43406</b>		

MONTHLY CATCH STATISTICS FOR ALL ANGLERS - 2008

LAKE=FT. LOUDOUN

MONTH	NUMBER FISH CAUGHT	RSE FOR CATCH	FISH CAUGHT PER HOUR	RSE FOR CATCH RATE	NUMBER FISH HARVESTED	RSE FOR HARVEST	FISH HARVESTED PER HOUR	RSE FOR HARVEST RATE
01 JANUARY	4960	59.9	0.79	44.8	1130	51.0	0.18	33.0
02 FEBRUARY	4048	19.5	0.71	10.3	513	32.1	0.09	26.1
03 MARCH	24300	24.5	1.38	19.1	4226	70.5	0.24	68.5
04 APRIL	41081	19.5	1.49	11.7	9926	36.3	0.36	32.5
05 MAY	34848	21.1	1.45	11.4	4086	53.5	0.17	48.6
06 JUNE	31419	18.6	1.09	17.6	4036	35.1	0.14	34.3
07 JULY	23513	45.6	1.08	28.0	2177	36.6	0.10	11.0
08 AUGUST	22688	25.0	0.98	7.1	2778	43.6	0.12	36.0
09 SEPTEMBER	18012	18.4	1.28	13.2	3377	41.2	0.24	39.6
10 OCTOBER	33255	33.0	2.35	25.7	6509	46.2	0.46	40.6
11 NOVEMBER	4240	38.0	0.85	29.8	499	79.5	0.10	70.8
12 DECEMBER	8597	38.3	0.90	20.2	2579	48.6	0.27	34.7
----- TOTAL	250961				41836			

SUMMARY OF SPECIES CATCH STATISTICS - 2008

LAKE=FT. LOUDOUN

SPECIES	TOTAL	RSE	SPECIES	INTENDED	TOTAL	RSE	SPECIES	INTENDED	% OF	AVERAGE	NUMBER
	NUMBER	FOR	CATCH	NUMBER	NUMBER	FOR	HARVEST	NUMBER	CAUGHT	WEIGHT	FISH
	FISH	CATCH	COMPOSITION	CAUGHT	FISH	HARVEST	COMPOSITION	HARVESTED	FISH	(LBS)	RECORDED
	CAUGHT		(%)		HARVESTED		(%)		RELEASED		
CARP	287	975.0	0.1	0	0		0.0	0	100.0		0
ANY BULLHEAD	490	773.0	0.2	490	0		0.0	0	100.0		0
BLUE CATFISH	80	1382.1	0.0	80	0		0.0	0	100.0		0
CHANNEL CATFISH	80	1382.1	0.0	80	0		0.0	0	100.0		0
WHITE BASS	2511	243.5	1.0	732	159	259.1	0.4	0	93.7	0.85	2
STRIPED BASS	7149	111.2	2.9	1493	95	411.6	0.2	0	98.7	2.85	2
CHEROKEE BASS	203	1018.6	0.1	203	0		0.0	0	100.0		0
ORANGE SPOTTED SUNFISH	557	517.0	0.2	0	0		0.0	0	100.0		0
BLUEGILL	28437	31.1	11.3	18088	4829	31.9	11.5	1916	83.0	0.67	63
SMALLMOUTH BASS	16377	40.7	6.5	16117	95	282.4	0.2	95	99.4	3.75	2
SPOTTED BASS	1856	260.1	0.7	1856	0		0.0	0	100.0		0
LARGEMOUTH BASS	100039	11.8	39.9	98409	3541	26.9	8.5	3541	96.5	2.44	51
WHITE CRAPPIE	68082	15.6	27.2	66670	24896	19.6	59.5	24254	63.4	0.90	349
BLACK CRAPPIE	10338	44.0	4.1	9678	6153	45.3	14.7	5876	40.5	1.13	87
YELLOW PERCH	69	2155.5	0.0	0	0		0.0	0	100.0		0
FRESHWATER DRUM	1141	329.9	0.5	527	0		0.0	0	100.0		0

SUMMARY OF FISHING EFFORT AND CATCH RATES FOR INTENDED SPECIES GROUPS - 2008

LAKE=FT. LOUDOUN

INTENDED SPECIES	ANGLER HOURS	RSE FOR ANGLER HOURS	ANGLER TRIPS	PERCENT EFFORT	NUMBER CAUGHT PER HOUR	RSE FOR CATCH PER HOUR	NUMBER HARVESTED PER HOUR	RSE FOR HARVEST PER HOUR	NUMBER OF INTERVIEWS
ANY CATFISH	9449	21.1	2246	4.8	0.43	46.4	0.09	64.7	24
STRIPED BASS	1926	61.5	443	1.0	0.86		0.00		3
ANY SUNFISH	5052	32.0	1125	2.6	1.66	58.5	0.42	103.7	14
ANY BLACK BASS	94694	8.0	20810	47.9	0.97	15.7	0.04	63.4	322
SMALLMOUTH BASS	536	80.7	119	0.3	0.25		0.00		2
ANY CRAPPIE	53849	9.2	11608	27.2	1.42	18.9	0.61	26.2	187
SAUGER	963	56.9	218	0.5	0.00		0.00		4
ANY SPECIES	31102	11.7	6812	15.7	0.74	34.6	0.07	111.5	75
OTHER	131	137.3	25	0.1	0.00		0.00		1
-----	-----		-----						
<b>TOTAL</b>	<b>197702</b>		<b>43406</b>						

**SUMMARY OF RELATIVE SPECIES CATCH RATES  
WITHIN TARGET GROUPS - 2008**

LAKE=FT. LOUDOUN

TARGET GROUP	SPECIES WITHIN TARGET GROUPS	RELATIVE CATCH RATE	RELATIVE HARVEST RATE
ANY CATFISH	ANY BULLHEAD	0.32	0.00
	ANY CATFISH	0.00	0.00
	BLUE CATFISH	0.05	0.00
	CHANNEL CATFISH	0.05	0.00
ANY SUNFISH	ORANGE SPOTTED SUNFISH	0.00	0.00
	BLUEGILL	1.66	0.42
ANY BLACK BASS			
ANY BLACK BASS	SMALLMOUTH BASS	0.17	0.00
	SPOTTED BASS	0.02	0.00
	LARGEMOUTH BASS	1.03	0.04
ANY CRAPPIE	WHITE CRAPPIE	1.24	0.49
	BLACK CRAPPIE	0.18	0.12

COMPARISON OF BLACK BASS CATCH RATES (# FISH/HOUR) BETWEEN TOURNAMENT AND NON-TOURNAMENT ANGLERS  
(MONTHS ARE LISTED ONLY IF > 90% OF BLACK BASS ANGLERS RESPONDED TO THE QUESTION ON TOURNAMENT PARTICIPATION)

LAKE=FT. LOUDOUN

MONTH	% BLACK BASS EFFORT BY TOURNAMENT ANGLERS	CATCH RATE FOR TOURNAMENT ANGLERS	# OF INTERVIEWS (TOURNAMENT)	CATCH RATE FOR NON-TOURNAMENT ANGLERS	# OF INTERVIEWS (NON-TOURNAMENT)
01 JANUARY	0		0	0.32	8
02 FEBRUARY	22	1.28	2	0.75	12
03 MARCH	32	0.88	3	1.34	21
04 APRIL	34	1.30	12	1.01	32
05 MAY	6	1.58	5	1.15	40
06 JUNE	13	1.41	9	0.89	50
07 JULY	50	0.95	10	0.90	9
08 AUGUST	23	0.88	7	0.89	39
09 SEPTEMBER	0		0	0.80	26
10 OCTOBER	0		0	1.07	19
11 NOVEMBER	0		0	0.75	8
12 DECEMBER	0		0	0.82	11

**SUMMARY OF TRIP EXPENDITURES AND CONSUMER SURPLUS  
FOR INTENDED SPECIES - 2008**

LAKE=FT. LOUDOUN

<b>INTENDED SPECIES</b>	<b>TOTAL TRIP EXPENDITURES</b>	<b>TOTAL CONSUMER SURPLUS</b>	<b>TOTAL VALUE BY ANGLERS</b>	<b>NUMBER OF INTERVIEWS</b>
ANY CATFISH	38700	10580	49280	24
STRIPED BASS	20780	760	21540	3
ANY SUNFISH	14020	8920	22940	14
ANY BLACK BASS	487630	314860	802490	322
SMALLMOUTH BASS	2840	500	3340	2
ANY CRAPPIE	164360	76510	240870	187
SAUGER	4230	840	5060	4
ANY SPECIES	73740	20950	94690	75
OTHER	300	80	380	1
----- <b>TOTAL</b>	----- <b>806600</b>	----- <b>434000</b>	----- <b>1240590</b>	----- <b>632</b>

**SUMMARY OF SOCIOLOGICAL QUESTIONS - 2008**

**LAKE=FT. LOUDOUN**

**DISTRIBUTION OF STATES OF RESIDENCE OF INTERVIEWED ANGLERS**

<b>STATE</b>	<b>NUMBER ANGLERS INTERVIEWED</b>	<b>PERCENT CONTRIBUTION</b>
TN	1129	97.4
OTHERS	30	2.6

**DISTRIBUTION OF COUNTIES OF RESIDENCE OF INTERVIEWED ANGLERS**

<b>COUNTY</b>	<b>NUMBER ANGLERS INTERVIEWED</b>	<b>PERCENT CONTRIBUTION</b>
BLOUNT	478	42.5
KNOX	471	41.8
LOUDON	102	9.1
OTHERS IN TN	75	6.7

**DISTRIBUTION OF ONE-WAY MILEAGE OF ANGLERS INTERVIEWED**

<b>ONE-WAY MILES TRAVELED</b>	<b>NUMBER ANGLERS INTERVIEWED</b>	<b>PERCENT CONTRIBUTION</b>
A) 0-25	1096	94.8
B) 26-100	30	2.6
C) 101-250	19	1.6
D) > 250	11	1.0

**DISTRIBUTION OF REASONS WHY INTERVIEWED ANGLERS MADE THE TRIP**

<b>REASON FOR TRIP</b>	<b>NUMBER ANGLERS INTERVIEWED</b>	<b>PERCENT CONTRIBUTION</b>
A) FISHING	620	98.4
B) VACATION	3	0.5
C) BUSINESS	6	1.0
D) OTHER	1	0.2

**DISTRIBUTION OF NUMBER OF DAYS IN TRIPS OF INTERVIEWED ANGLERS**

<b>NUMBER DAYS IN TRIP</b>	<b>NUMBER ANGLERS INTERVIEWED</b>	<b>PERCENT CONTRIBUTION</b>
A) 1	616	97.8
B) 2-5	8	1.3
C) 6-10	5	0.8
D) 11-15	1	0.2